



# Lull 844 C42



## Especificaciones

.Altura de trabajo	12.80 m
.Altura de plataforma elevada	12,80 m
.Altura de plataforma plegada	2,40 m
.Dimensiones de la plataforma	1,20 x 2,25 m
.Ancho total del equipo	2,55 m
.Longitud total	6,50 m
.Capacidad de peso	3.600 kg.
.Sistema motriz	Diesel
.Peso total del equipo	10.505 kg.

# 844C-42 Telescopic Handler Specifications

## Performance

Max. Capacity .....8,000 lb. (3628,8 kg)  
 Lift height .....42 ft. (12,8 m)  
 Land height .....42 ft. (12,8 m)  
 Max. Capacity @  
 full height .....6,000 lb. (2721,6 kg)  
 TransAction .....80 in. (203,2 cm)  
 Max. forward reach .....32 ft. (9,7 m)  
 Capacity @ max.  
 forward reach .....500 lb. (226,8 kg)  
 Reach below grade .....23 in. (58,4 cm)  
 Outside turn radius ..13 ft. 8 in. (4,2 m)  
 Frame leveling .....12.5 degrees L/R

## Dimensions

Height .....95 in. (241,3 cm)  
 Length (w/ 42 in. forks) ..23 ft. 7 in. (7,1 m)  
 Width .....8 ft. (2,4 m)  
 Wheelbase .....124 in. (314,9 cm)  
 Ground clearance .....16 in. (40,6 cm)  
 Weight .....23,160 lb. (10,505 kg)

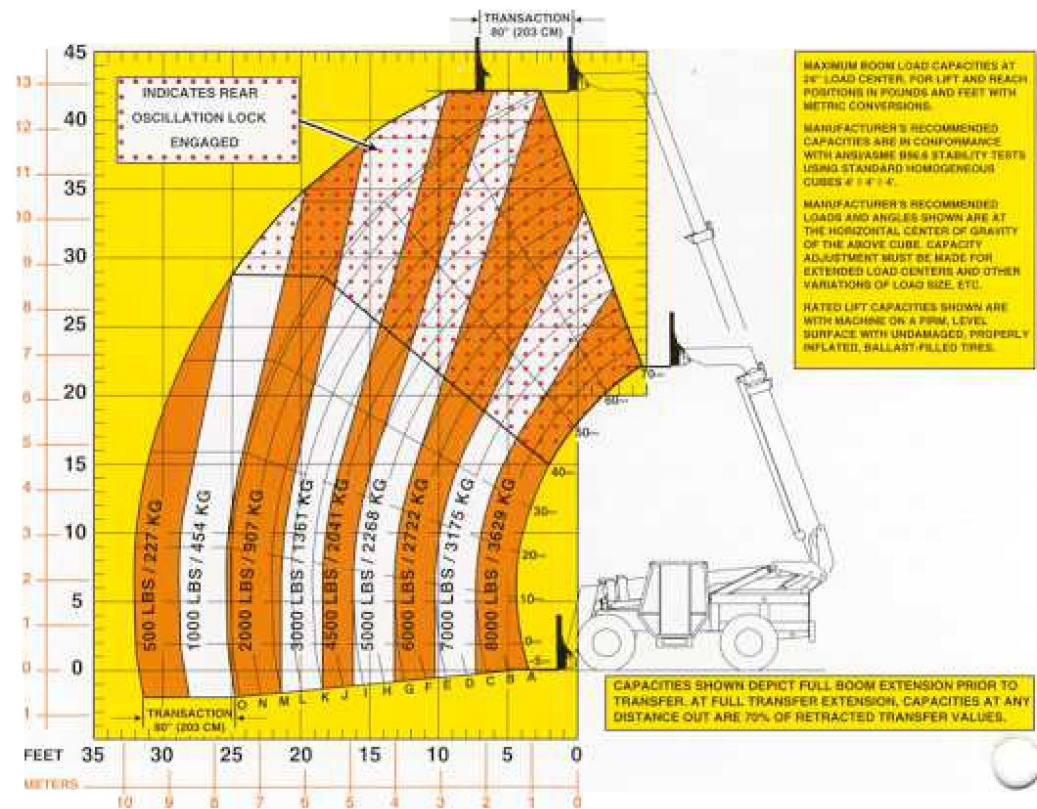
## Drive Train

Engines .....Cummins 110 HP  
 (82 kW) turbo diesel  
 John Deere 115 HP  
 (85 kW) turbo diesel  
 Transmission .....4-speed Powershift  
 Axles .....Outboard planetary  
 front & rear  
 Brakes .....Wet disc  
 Tires .....All terrain 13.00 x 24,  
 12-ply

## Standard Features

4 wheel drive .....Yes  
 4 wheel steer, round, front & crab .....Yes  
 Automatic fork leveling .....Yes  
 Multi-function joystick control .....Yes  
 Number of boom sections .....3  
 Auxiliary hydraulics to  
 boom end .....Yes

## Load Chart



## Options

- Multiple tire options
- Cab enclosure options
- Suspension seat
- Outriggers
- Light packages
- Engine block heaters

## Attachments

- Standard fork carriages
- Side-tilt carriages
- Hydraulic fork position carriage
- Lumber forks
- Truss boom with or without winch
- Sweeper broom with bucket
- Concrete hoppers
- Framers carriages
- Swing carriages
- Pallet forks
- Cubing forks
- Augers
- 1¼ cu. yd. (.96 cu. m) light material bucket